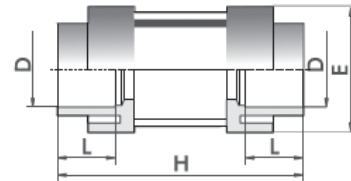
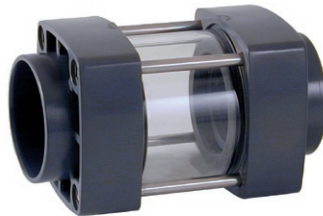


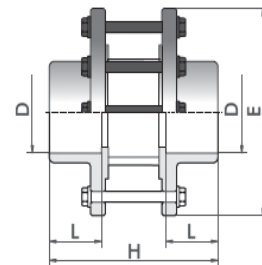
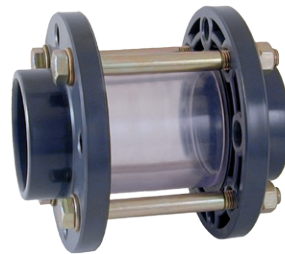
## Sight Glasses

- body PVC-U
- O-rings EPDM
- solvent cementing socket metric
  - d50 - d63 PN6 PMMA\* Type A
  - d75 - d225 PN10 SAN\*\* Type B
- BSP female threaded
  - 1½" - 2" PN6
- 4 bolts zinc plated

Type A



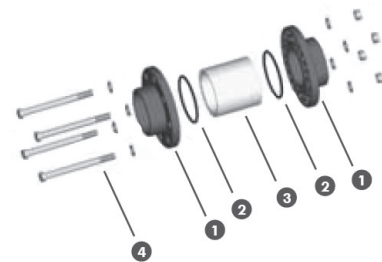
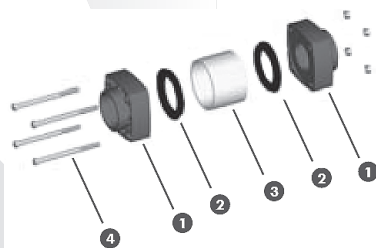
Type B



\* PMMA: Acrylglass / Plexiglass

\*\* SAN : Styrol-Acrylnitril

d	DN	L	H	E	Type
50	40	31	130	80	A
63	50	38	159	92	A
75	65	44	165	185	B
90	80	51	180	200	B
110	100	61	250	220	B
125	110	69	280	230	B
140	125	76	310	250	B
160	150	86	360	285	B
200	175	106	420	315	B
225	200	119	500	340	B
1½"		31	130	80	A
2"		38	159	92	A

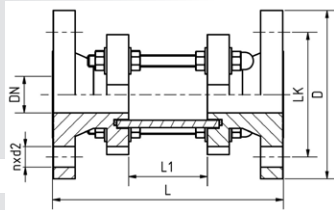
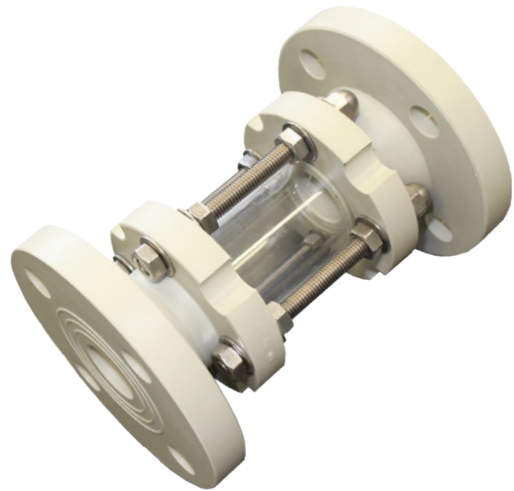


1 body  
2 O-Rings  
3 Sight Glass  
4 bolts

PVC-U  
EPDM  
PMMA / SAN  
zinc plated

# Sight Glasses

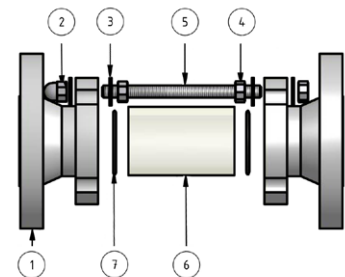
- body PVC-U, PP-H, PVDF
- O-rings EPDM / FPM
- 2 o-rings for improved safety
- flanged, alternatively Union Ends
- Borosilicate glass
- bolts / washers Stainless Steel 1.4301
- PVC-C and special connections on request

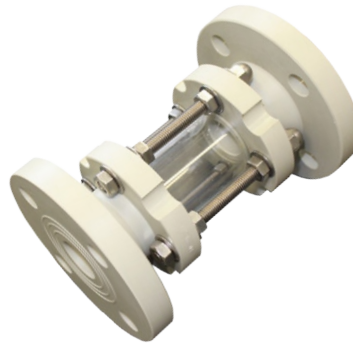


d	DN	inch	L	L1	LK	D	n x d2
32	25	1"	160	56	85	115	4 x ø14
40	32	1¼"	180	68	100	140	4 x ø18
50	40	1½"	200	80	110	150	4 x ø18
63	50	2"	230	102	125	165	4x ø18
75	65	2½"	290	125	145	185	4x ø18
90	80	3"	310	136	160	200	8 x ø18
110	100	4"	350	170	180	220	8 x ø18
160	150	6"	480	180	240	285	8 x ø22

## spare parts

no	description	material
1	flanges DIN 2501 PN10	PVC, PP, PVDF
2	hexagon cap nuts	A4 St. Steel
3	washers	A4 St. Steel
4	nuts	A4 St. Steel
5	bolts	A2 St. Steel
6	pipe	Borosilicate
7	O-rings	EPDM, FPM





## PVC-U

mm			PN	EPDM	FPM	KG
d	DN	inch		Code no.	Code no.	
32	25	1"	10	479700	479708	1,30
40	32	1¼"	10	479701	479709	1,60
50	40	1½"	10	479702	479710	2,10
63	50	2"	10	479703	479711	2,60
75	65	2½"	7	479704	479712	3,80
90	80	3"	7	479705	479713	5,60
110	100	4"	6	479706	479714	6,40
160	150	6"	5	479707	479715	13,80

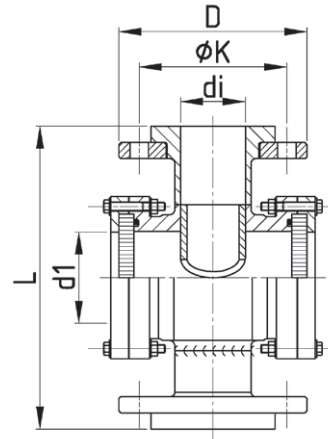
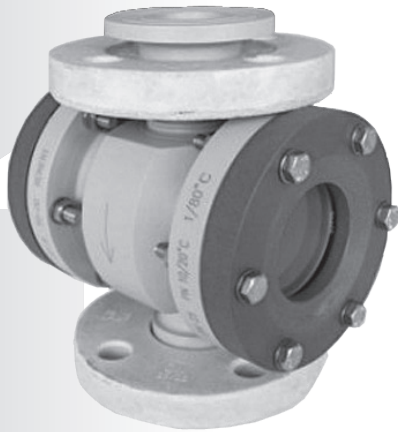
## PP-H

mm			PN	EPDM	FPM	KG
d	DN	inch		Code no.	Code no.	
32	25	1"	10	479716	479724	1,00
40	32	1¼"	10	479717	479725	1,20
50	40	1½"	10	479718	479726	1,60
63	50	2"	10	479719	479727	1,90
75	65	2½"	7	479720	479728	3,00
90	80	3"	7	479721	479729	4,20
110	100	4"	6	479722	479730	4,60
160	150	6"	5	479723	479731	10,80

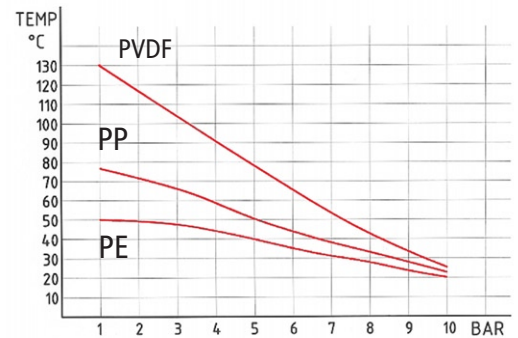
## PVDF

mm			PN	EPDM	FPM	KG
d	DN	inch		Code no.	Code no.	
32	25	1"	10	479732	479740	1,50
40	32	1¼"	10	479733	479741	1,80
50	40	1½"	10	479734	479742	2,40
63	50	2"	10	479735	479743	2,90
75	65	2½"	7	479736	479744	4,50
90	80	3"	7	479737	479745	6,30
110	100	4"	6	479738	479746	7,00
160	150	6"	5	479739	479747	16,00

# Sight Glasses



- PE-100, PP, PVDF, EPDM O-rings, Maxo or Borosilicate Glasses, Stainless Steel bolts and nuts
- DN25 - DN200
- flanges DIN 2501, PN10
- overall length acc. to DIN EN558-1 series 1
- temperature/pressure range see diagram
- optionally with PTFE or Viton O-rings PVDF lined, PVDF foil, ANSI flanges



DN	d1	L	d	d1	PN	k	D	bolts	KG
25	32	160	25	45	10	85	115	4 x M 12	1,2
32	40	180	31	45	10	100	140	4 x M 16	1,3
40	50	200	39	64	10	110	150	4 x M 16	2,2
50	63	230	50	73	10	125	165	4 x M 16	2,9
65	75	290	59	98	10	145	185	4 x M 16	5,5
80	90	310	71	115	10	160	200	8 x M 16	8,0
100	110	350	87	117	10	180	220	8 x M 16	10,0
125	140	400	111	135	6	210	250	8 x M 16	15,0
150	160	480	127	154	6	240	285	4 x M 20	20,0
200	225	600	180	154	6	295	340	4 x M 20	33,0

### on request

Cast Iron	GG-25	(EN-JL 1040)	DN15-250,	3/8" - 2"
Ductile Iron	GGG-40.3	(EN-JS 1049)	DN15-250,	3/8" - 2"
Gunmetal	Rg5	(2.1096.01)	DN15-250,	3/8" - 2"
Steel	RSt37-2	(1.0038)	DN15-250,	3/8" - 2"
	Hll	(1.0425)		
Cast Steel	GS_C25	(1.0619)	DN15-250,	3/8" - 2"
special steel casting		(1.4408)	DN15-250,	3/8" - 2"
Stainless Steel		(1.4571)	DN15-250,	3/8" - 2"

## Sight Glass for flange connection

- glass tubes of 24, 30 and 50 mm - 0,94" / 1,18" / 1,97" length, made of PMMA Acrylic, Soda-lime, Borosilicate, Quartz
- the wall thickness of the Sight Glass corresponds to pipe standards
- maximum pressure 16 bar / 150 lbs, for higher pressures on request
- maximum temperature 1100°C / 2012°F
- for installation between DIN / ANSI flanges DN10 - DN1000, 0,39" – 40" (no metal casing required)
- resistant to aggressive media, ideal for steril and aseptic application



Description	Temperature	Glass type
Low-cost design	80°C / 176°F	Acrylic Glass
High resistance to Chemicals	150°C / 302°F	Soda-lime Glass
Resistant to aggressive media	300°C / 572°F	Borosilicate Glass
Resistant to aggressive media	1100°C / 2012°F	Quartz Glass