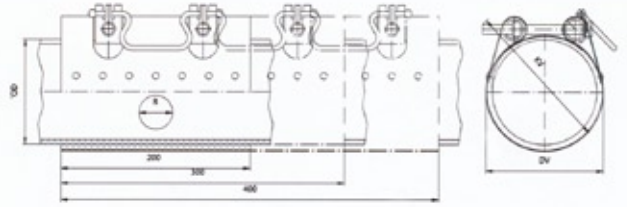


Repair Clamp

One-piece Repair Clamp 44 -330 mm



DN	OD mm	Working-pressure * bar	Tightening torque NM	clamp length			DV on largest pipe mm	KV on largest pipe mm	Allen head mm	Bolt size
				2 locking bolts	3 locking bolts	4 Locking bolts				
44	44-48	16	20 ± 2	200	300		60	117	17	M10
48	48-52	16	20 ± 2	200	300		64	120	17	M10
54	54-58	16	20 ± 2	200	300		70	125	17	M10
60	60-67	16	20 ± 2	200	300		79	127	17	M10
70	70-77	16	20 ± 2	200	300		89	135	17	M10
75	75-81	16	20 ± 2	200	300		95	138	17	M10
82	82-89	16	20 ± 2	200	300	400	101	145	17	M10
87	87-95	16	20 ± 2	200	300	400	107	149	17	M10
88	88-95	16	20 ± 2	200	300	400	110	148	17	M10
95	95-104	16	20 ± 2	200	300	400	116	155	17	M10
108	108-118	16	20 ± 2	200	300	400	120	166	17	M10
113	113-123	16	20 ± 2	200	300	400	135	171	17	M10
118	118-128	16	20 ± 2	200	300	400	140	175	17	M10
120	120-131	16	20 ± 2	200	300	400	143	175	19	M10
132	132-142	16	35 ± 2	200	300	400	154	188	19	M12
135	135-145	16	35 ± 2	200	300	400	157	191	19	M12
139	139-149	16	35 ± 2	200	300	400	161	195	19	M12
145	145-155	16	35 ± 2	200	300	400	167	201	19	M12
159	159-170	16	35 ± 2	200	300	400	182	214	19	M12
167	167-178	16	35 ± 2	200	300	400	190	221	19	M12
176	176-187	16	35 ± 2	200	300	400	199	230	19	M12
193	193-203	16/10	35 ± 2	200	300	400	215	247	19	M12
215	215-225	10	35 ± 2	200	300	400	237	268	19	M12
228	228-239	10	35 ± 2	200	300		251	281	19	M12
240	240-250	10	35 ± 2		300		262	292	19	M12
261	261-271	10	35 ± 2		300		283	313	19	M12
26	269-280	10	35 ± 2		300		292	321	19	M12
280	280-291	10	35 ± 2		300		303	332	19	M12
315	315-325	6	35 ± 2		300		337	366	19	M12
320	320-330	6	35 ± 2		300		342	371	19	M12

* Working pressure for gas max 5 bar

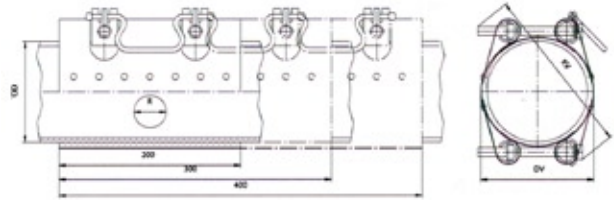
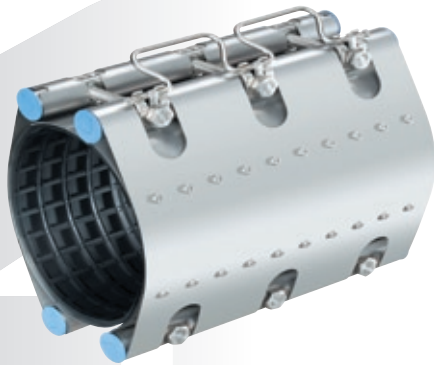
- the clamp cannot be used for different pipe diameters (transitions)
- radial length of damaged area max. 20% of pipe outside diameters
the repair clamp must be **centred** over the damaged area
- R = maximum axial length of damaged area
- test pressure = 1.5 x PS
- comply with installation instructions

R =	50 mm	150 mm	250 mm
Clamp length	200 mm	300 mm	400 mm

Components	Materials
Casing	1.4301 / 304
Screws	1.4301 / 304
Bolts	1.4301 / 304
Sealing sleeve	Temp.: -5°C to +25°C
NBR	Media: all water qualities, gas

Repair Clamp

Two-piece Repair Clamp 88 - 440 mm



DN	OD mm	Working-pressure * PS bar	Tightening torque NM	clamp length			DV on largest pipe mm	KV on largest pipe mm	Allen head mm	Bolt size
				2 locking bolts	3 locking bolts	4 Locking bolts				
88	88-108	16	20 ± 2	200	300	400	117	186	17	M10
100	100-120	16	20 ± 2	200	300	400	132	197	17	M10
108	108-128	16	20 ± 2	200	300	400	140	204	17	M10
114	114-134	16	20 ± 2	200	300	400	146	209	17	M10
120	120-140	16	20 ± 2	200	300	400	152	215	17	M10
130	130-150	16	35 ± 2	200	300	400	162	228	19	M12
140	140-160	16	35 ± 2	200	300	400	172	237	19	M12
159	159-180	16	35 ± 2	200	300	400	192	255	19	M12
168	168-189	16	35 ± 2	200	300	400	201	264	19	M12
190	190-210	16	35 ± 2	200	300	400	222	284	19	M12
210	210-230	10	35 ± 2	200	300	400	242	303	19	M12
218	218-238	10	35 ± 2	200	300	400	252	312	19	M12
240	240-260	10	35 ± 2	200	300	400	272	332	19	M12
269	269-289	10	35 ± 2	200	300	400	301	360	19	M12
282	282-302	10	35 ± 2	200	300	400	314	373	19	M12
315	315-335	10/6	35 ± 2	200	300	400	347	405	19	M12
322	322-344	6	35 ± 2		300	400	356	413	19	M12
337	337-358	6	35 ± 2		300	400	370	427	19	M12
347	347-367	6	35 ± 2		300	400	379	436	19	M12
365	365-385	6	35 ± 2			400	397	453	19	M12
410	410-430	6	35 ± 2			400	442	498	19	M12
420	420-440	6	35 ± 2			400	452	508	19	M12

* Working pressure for gas max 5 bar

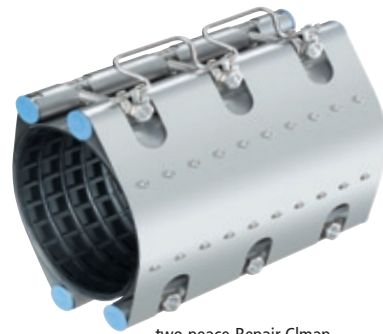
- the clamp cannot be used for differing pipe diameters (transitions)
- radial length of damaged area max. 20% of pipe outside diameters the repair clamp must be **centred** over the damaged area
- R = maximum axial length of damaged area
- test pressure = 1.5 x PS
- comply with installation instructions

R =	50 mm	150 mm	250 mm
Clamp length	200 mm	300 mm	400 mm

Components	Materials
Casing	1.4301 / 304
Screws	1.4301 / 304
Bolts	1.4301 / 304
Sealing sleeve	Temp.: -5°C to +25°C
NBR	Media: all water qualities, gas



one-piece-Repair Clmap



two-piece-Repair Clmap

One and two-piece Repair Clamps for the safe and reliable repair of gas, water and drainage pipes made from various materials.

Applications

- Repair Clamps for sealing damaged gas, water and drainage pipes made from cast iron, fiber coment or PVC
- sizes from DN 40 to DN 400
- with standard NBR sealing sleeve

Working instructions

- the repair clamp must be at least as long as the outside diameter of the pipe being repaired
- Gas pipes:** permitted working pressure 5 bar (< DN 300)
- Water pipes:** permitted working pressure
- < DN 200 PN 16
 - > DN 200 PN 10
 - > DN 300 on request

General

- made from Stainless Steel
- ideal for repairing large damaged areas up to 250 mm long
- the large-surface waffle profile of the sealing sleeve reduces the required tightening torque, extending the life of the NBR material
- integrated ergonomic hand grips for easy handling
- no loose screws or parts when opening
- both the one-piece and two-piece Repair Clamps are complete units
- modern manufacturing methods, including pressure jointing, prevent changes in the material structure and stresses in the material
- the Stainless Steel screws are permanently coated with Molykote, which prevents erosion of the screws and also greatly reduces the torque required.
- installation with standard tools (torque wrench with hex socket) – without extensions