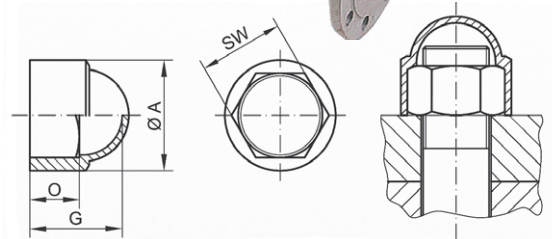
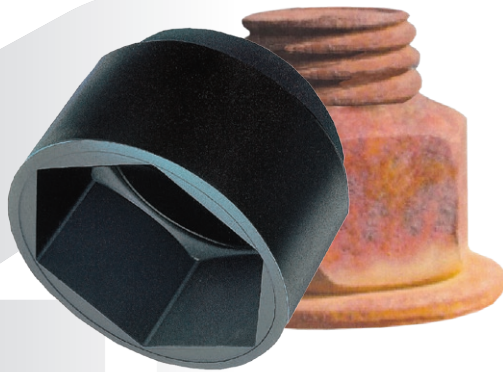


Protection Caps GPN 1000



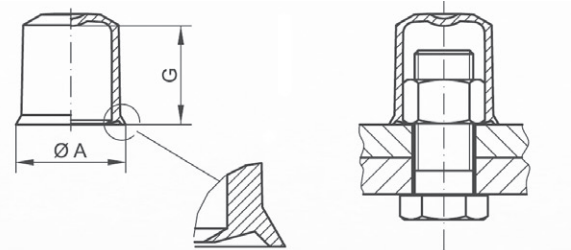
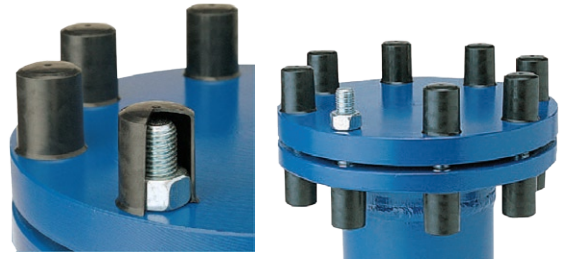
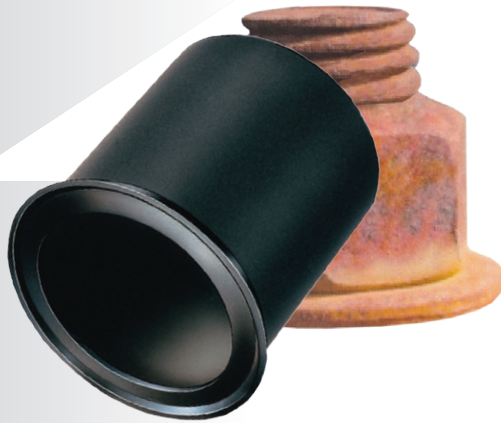
Protection Caps GPN 1000

- cover threads
- protect bolts and nuts against corrosion
- prevent the use of spanners (due to cylindrical base)
- substitute for cap nuts
- material LD-Polyethylene
- colour: black, grey

Additional dimensions, heat resistant types and custom versions on request

Dimension / mm				suitable for nuts		Order No.
A	G	O	Width across flats SW	Metric thread	Pipe Thread	
9,0	7,5	3,5	7	M 4		1000 / 1916
10,9	8,0	5,0	8	M 5		1000 / 1068
12,9	12,0	6,0	10	M 6		1000 / 1069
16,8	14,0	7,5	13	M 8	M 8 x 1	1000 / 0893
18,0	14,0	7,5	14			1000 / 1071
21,3	18,0	9,0	16	M 10		1000 / 8267
21,3	18,5	9,0	17	M 10	M 10 x 1	1000 / 1072
23,0	19,4	11,0	18	M 12		1000 / 0857
23,6	20,0	11,0	19	M 12	M 12 x 1,5	1000 / 1073
26,0	22,5	12,0	21	M 14	M 14 x 1,5	1000 / 0190
27,5	22,5	12,0	22	M 14	M 14 x 1,5	1/4 1000 / 1074
29,8	25,5	14,0	24	M 16	M 16 x 1,5	1000 / 1075
34,0	29,0	16,0	27	M 18	M 18 x 1,5	M 18 x 2 3/8 1000 / 1076
37,4	31,0	17,0	30	M 20	M 20 x 1,5	M 20 x 2 1000 / 1077
39,7	34,0	19,0	32	M 22	M 22 x 1,5	M 22 x 2 1/2 1000 / 1078
44,4	38,0	20,0	36	M 24	M 24 x 1,5	M 24 x 2 5/8 1000 / 1079
50,1	44,0	23,0	41	M 27	M 26 x 1,5	1000 / 1080
					M 27 x 1,5	M 27 x 2 3/4 1000 / 1080
					M 28 x 1,5	1000 / 1080
55,9	49,0	25,0	46	M 30	M 30 x 1,5	M 30 x 2 7/8 1000 / 1081
60,5	53,0	27,0	50		M 32 x 1,5	1000 / 1414
					M 33 x 1,5	M 33 x 2 1000 / 1414
67	57,0	30,0	55		M 35 x 1,5	1000 / 1811
					M 36	M 36 x 1,5 M 36 x 3 1000 / 1811
72,0	60,0	38,0	60	M 39	M 38 x 1,5	1000 / 3762
					M 39 x 1,5	M 39 x 3 1000 / 3762
					M 40 x 1,5	1000 / 3762
76,6	63,0	42,0	65	M 42	M 42 x 1,5	M 42 x 3 1000 / 3763
85,5	73,0	38,0	70	M 45		1000 / 6706
91,6	78,5	41,0	75			1 1/2 1000 / 8638
98,0	83,4	43,0	80			1 3/4 1000 / 8639
116,7	102,0	55,0	95			2 1/4 1000 / 8641

Protection Caps GPN 1010



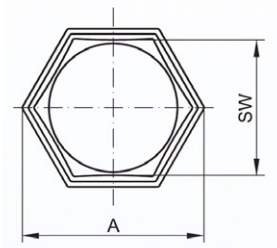
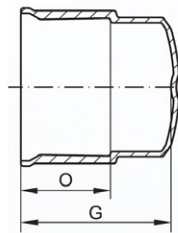
Snap-on Caps GPN 1010

- for hexagonal nuts
- the circumferential clamping rim snap-fits under the nut
- it provide effective protection against contamination, damage, corrosion, chemical attack and injury
- material: LD-Polyethylene
- colour: black

Additional dimensions, heat resistant types and custom versions on request

Dimension / mm		suitable for nuts			Order No.
A	G	Width across flats SW	Metric thread		
12,0	10,2	8	M 5		1010 SW 8
15,0	13,5	10	M 6		1010 SW 10
19,0	18,5	13	M 8	M 8 x 1	1010 SW 13
24,4	25,0	17	M 10	M 10 x 1	1010 SW 17
27,0	27,7	19	M 12	M 12 x 1,5	1010 SW 19
30,5	33,0	22	M 14	M 14 x 1,5	1/4 1010 SW 22
33,5	36,6	24	M 16	M 16 x 1,5	1010 SW 24
41,0	47,0	30	M 20	M 20 x 1,5 M 20 x 2	1010 SW 30
49,3	56,5	36	24	M 24 x 1,5 M 24 x 2	1010 SW 36

Protection Caps GPN 1050



Protection Caps GPN 1050

- for hose ends with union nut and hexagonal nut
- effective protection against contamination, damage, corrosion and injury
- material: LD-Polyethylene
- colour: black

Additional dimensions, heat resistant types and custom versions on request

Dimension / mm			Width across flats SW	Order No.
A	G	O		
16,6	26,3	14,5	14	1050 SW 14
23,1	26,3	14,5	17	1050 SW 14
25,2	27,1	15,5	19	1050 SW 14
28,7	26,9	15,5	22	1050 SW 14
30,5	28,5	17,0	24	1050 SW 14
34,5	28,2	17,0	27	1050 SW 14
38,0	28,4	17,0	30	1050 SW 14
40,3	28,4	17,0	32	1050 SW 14
44,9	28,3	17,0	36	1050 SW 14
50,7	29,5	18,0	41	1050 SW 14
61,0	30,5	19,5	50	1050 SW 14
72,6	31,0	20,0	60	1050 SW 14

Protection Caps

Materials and Colours

Material Characteristics

- prevent damage and contamination during transport, storage and manufacturing
- made from LD-PE and LLD-PE
- both are hydrocarbon compounds - recyclable, ground water natural and suitable for thermal utilization
- for special load or exposure requirements, wether mechanical, thermal or chemical
- other materials on request

Type of plastic	Designation	Hardness
LD-PE	Polyethylene, low density	soft / elastic
LLD-PE	Polyethylene, linear low density	soft / elastic

Special Colours

- for custom made products, additional colours are available. Colour deviations due to technical reasons are expressly reserved as such differences are inevitable due to variations in pigments and plastic raw materials
- please enquire about colours not listed

Colour	Note	Designation
sulphur yellow	signal colour	RAL 1016
pure orange	signal colour	RAL 2004
fired red	signal colour	RAL 3000
light blue		RAL 5012
emerald green	signal colour	RAL 6001
squirrel green		RAL 7000
blue grey		RAL 7031
fawn brown		RAL 8007
pure white		RAL 9010
jet black		RAL 9005

Chemical Resistance

- resistant
- conditionally resistant

Type of Plastic	Weak acids	Weak alcalis	Alcohol	Solvents	Fuels	Mineral oils	Grease / oil	Water, hot
LD - PE	•	•	•	■	■	■	•	•
LLD - PE	•	•	•	■	■	■	•	•

- material properties stated are based on information available from raw material suppliers

Physical Characteristics

Type of Plastic	Short - time	Continuous	Continuous	Clear	Transparent	Opaque	DIN 16901	DIN ISO 3302 - 1
LD-PE	80°C	60°C	- 40°C	•	•	•	•	-
LLD-PE	90°C	70°C	- 40°C	•	•	•	•	-